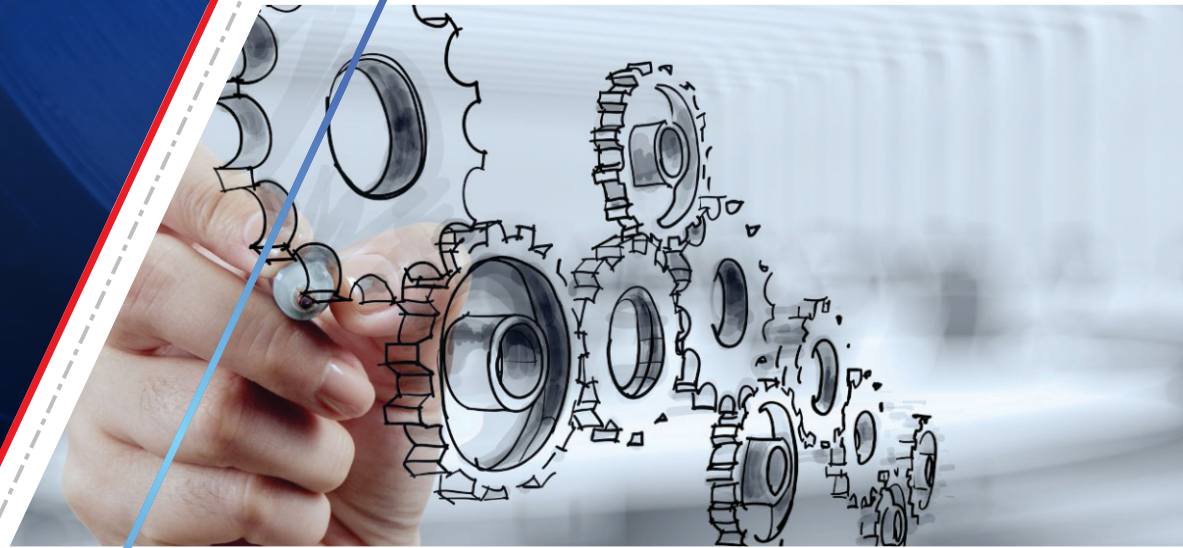




COMPANY PROFILE


- * Mechanical
- * Electrical
- * Electronics






About Us

TOPKLAN ENGINEERING SERVICES LIMITED (TOPKLAN) is an indigenous Engineering Consultancy Firm registered in November 2014. From inception, the Company has grown in the industry majorly in rendering professional services in the built environment with particular reference to residential developments, commercial outfits, office development and industrial developments.

Our comprehensive approach to design solutions by involving both Mechanical and Electrical services engineers is considered an imperative to effective project delivery.

 **Unit 302** 56, Olonode Street
Off Hughes Avenue, Alagomeji, Yaba, Lagos.

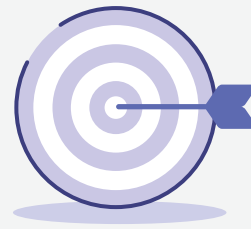
 0802 359 9742
 0903 086 7276

 topklanprojects@topklan.com
Sheriff@topklan.com



Vision

Our vision at Topklan Engineering Services Limited is to be a world class Mechanical and Electrical Consulting firm that provides an excellent professional service



Mission

Our Mission is to provide an excellent service and to deliver engineering solutions that enhanced the Clients building portfolio and have fun doing it!



Objective

The objective of the company is to render professional services on projects to the utmost delight of clients.

The technical complexity of Building Services requirement coupled with the harsh economic conditions now dictate that designs must be handled with great expertise for cost effective solutions and installations



The firm offers professional services working in close relationship with other consultants to deliver:

* **Preliminary design and cost estimate**

This involves the preparation of sketch proposals, highlighting clients' requirements and criteria thereby generating critical information required for the engagement of relevant consultants/specialists.

* **Production Information**

This includes complete production of working drawings and documents necessary for planning assessment & approval, tender action and construction.

* **Project Supervision**

The firm's involvement at this level of project development entails contracts management & project supervision with a view to ensuring compliance with contract terms and the attainment of acceptable level of workmanship while ensuring the delivery of high quality installation works.

The company offers the range of Consultancy Services referred to as Building Services Engineering amongst which are:

Mechanical Services

- * Air-Conditioning
- * Ventilation Systems
- * Piped Services
- * Sewage and Water Treatment systems
- * Kitchen System
- * Domestic and Industrial Operations
- * Fire Fighting System

Electrical and Electronic Services

- * High and Low Voltage Distribution systems
- * Lighting systems
- * Telephone Systems & Distribution
- * Television Signal Reception and Distribution
- * Burglar Security systems
- * Fire Detection and Alarm Systems

Lifts Services

- * General Passenger & Good Lifts
- * Escalators and Cradles.

KEY PERSONNEL PROFILE



ENGR. S.O. KILANSE

0802 359 9742

Position: Managing Director

Qualifications: M.Eng. Mechanical Engineering,
COREN Registered – R. 27,221
Registered Member of ASHRAE
Registered Member of NiMechE

Work experiences:

2005 – 2006

- * Shell Concept Ltd, Surulere, Lagos.
- * Draughtsman & Site Engineer

2006 – 2008

Building Consultants Ltd (Project Engineer) Projects completed include:

- * Development at Glover Road, Ikoyi, Lagos for Westfoster Development Company Limited. (2007)
- * Development at 5b, Temple Road, Ikoyi, Lagos for Westfoster Development Company Limited. (2007)

June – October 2008

Gomet Associate Ltd, Fadeyi, Yaba, Lagos. (Project Engineer) Projects completed include:

- * Renovation of CBN Branch at Satellite Town, Lagos. (2008)

Nov 2008 - Nov 2014

Consultants Collaborative Partnership, Oniru, Lagos (Senior Project Engineer) Projects completed include:

- * Office Development for Guarantee Trust Assurance (now Mansard Insurance Plc), Bishop Aboyade Cole, Victoria Island, Lagos. (2012)
- * Office Development for Tami Thames Ltd at Oniru, Lagos. (2010)
- * Design of 5,000 Seater Auditorium at Freedom Way, Lekki Phase 1, Lagos. (Under construction)
- * Multi-Family Residential Development for FBN Mortgage at UPDC ESTAE, Lekki, Lagos. (2014)
- * Design of Office Building (King's Tower) at Kingsway Road, Ikoyi, Lagos (Under Construction)

KEY PERSONNEL PROFILE



ENGR. OLAWALE OLAYIWOLA

0805 610 1005

Position: Head of Electrical Team

Qualifications: BEng. Electrical Engineering,
COREN Registered

Work experiences:

May 2006 - June 2015 Consultants Collaborative Partnership, Oniru, Lagos (Project Engineer)

Projects completed include:

- * Office Development for Tami Thames Ltd at Oniru, Lagos. (2010)
- * Office Development for Guarantee Trust Assurance (now Mansard Insurance Plc), Bishop Aboyade Cole, Victoria Island, Lagos. (2012)
- * KFC Outlet at Lekki Phase 1, Lagos (2013)
- * Catering Facility for Airline Service Limited, Abuja (2014)
- * KFC Outlet at Asokoro and Grand Tower Mall, Abuja (2014)

ENGR. FEMI ODUBIYI

0801 856 1501

Position: Head of Mechanical Team

Qualifications: BSC. Electrical Engineering,
COREN Registered – R. 20,017
Registered Member of COREN

Work experiences:

May 2006 - June 2015 Unecon Associates Ltd, Lagos (Senior Project Engineer)

Projects completed include

- * Radisson Blu Hotel Project at 46 Forces Avenue GRA Port Harcourt
- * Four Star Hotel Development, Abuja (2009)
- * Office Development, Onitsha (2013)
- * Development For Aspire Consult Limited at Adeniyi Coker St, Oniru, Lagos (2014)
- * Civic Centre at Ado for Ekiti State Government, Ekiti (2014)



Showroom Development
for Skymit Limited



Alliance Francaise at Osborne Road.



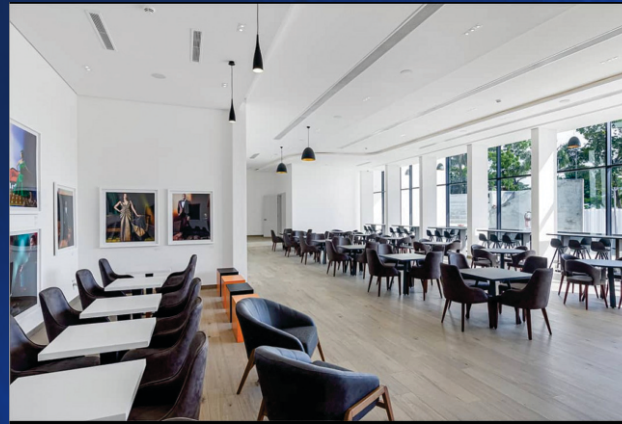
Mixed use Elegushi



The Altona Development at Ikoyi



Private Residence
at Nikon Town Estate



ALIANSE FRACAISE



BLACKBELL LAKSI



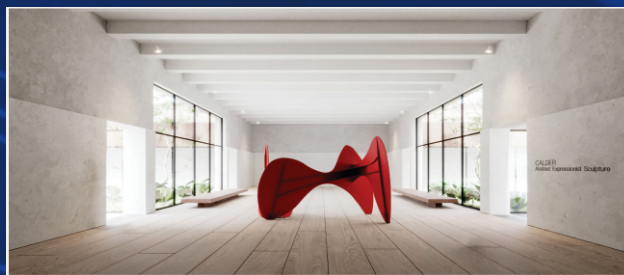
CONOIL IKEJA



CORAL REEF DEVELOPMENT AT LEKKI



FLORENCE APARTMENT AT LEKKI



ILORIN
CIVIC CENTER



**LAKE RIVER
DEVELOPMENT AT LEKKI**



Matisse: Single Family Unit



Matisse: Multi Family Terraces



**LOTUS CAPITAL
AT AWOLOWO ROAD**



MIXED USE DEVELOPMENT AT ELEGUSHI



ONIRU HEIGHTS AT VI



PRIVATE RESIDENCE AT NICON TOWN



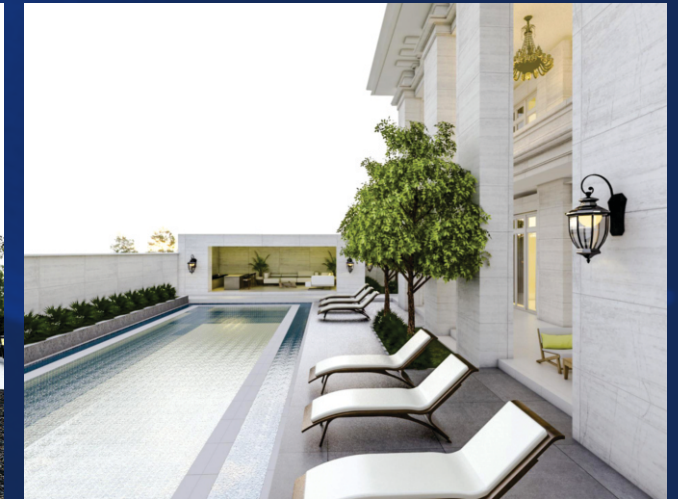
PROJECT GLORY



PSB 50, SAKA TINUBU



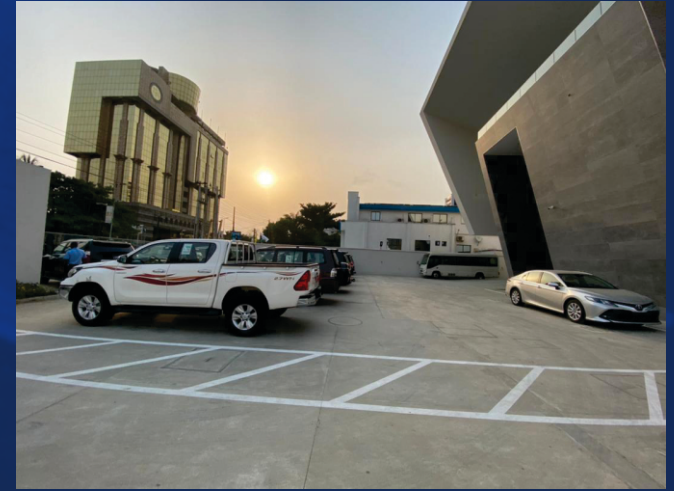
RESIDENTIAL DEVELOPMENT AT DELTA



RESIDENTIAL DEVELOPMENT AT NICON TOWN



RESIDENTIAL DEVELOPMENT AT SHORELINE ESTATE



SKYMIT AT ADEOLA ODEKU



SPAR DEVELOPMENT



THE ALTONA @ IKOYI



NIGERIAN BAR ASSOCIATION



AGAJA BEACH HOUSE



THE FORTE AT LEKKI



PROJECT GLORY AT BANANA ISLAND IKOYI

PRESENT AND PAST PROJECT REFERENCES

PROJECT	LOCATION	OUR CLIENT	STATUS	YEAR
Private Residential Development at Shoreline Ikoyi	Lagos	Baron Architecture	construction	2021
Agaja Beach House	Lagos	CMDesign	Completed	2021
Tiffany Apartment, Lekki	Lagos	Idlewoods	Construction	2021
Palm Estate Development	Benin	Studio Elementental	Design stage	2021
Florence Apartment, Lekki	Lagos	Lenox and Blaire	Construction	2021
ILF Office Retrofit, V/Island	Lagos	CMDesign	Completed	2021
Office Development of Mactay, Lekki	Lagos	Baron Architecture	Construction	2021
Residential Development at Banana island	Lagos	Gabonn Associates	Construction	2021
Mixed-use Development At Elegushi	Lagos	Gabonn Associates	Design stage	2021
Cest la Vie Beach House	Lagos	CMDesign	Design	2021

PRESENT AND PAST PROJECT REFERENCES

PROJECT	LOCATION	OUR CLIENT	STATUS	YEAR
Private Residential at banana island	Lagos	Gabonn Associates	Construction	2021
Private Residential at banana island	Lagos	CMDesign	Construction	2021
Private Residential Development At Eko Atlantic	Lagos	Gabonn Associate	Design	2021
Muti-unit residential development At Lekki	Lagos	Power view real-Estate	Construction	2021
Karimu Ikotun mall	Lagos	Cobblestone Properties	Design	2021
Ile Oja (shopping Complex) Sausi Fafuwa	Lagos	Cobblestone Properties	Design	2021
Mixed use Development For Forte	Lagos	Studio Elementals	Design	2021
Ilorin Museum and Garden	Ilorin	Studio Contra	Tendering	2021
Private Residential Development at Nikon	Lagos	Abigail Micheal Ltd	Design	2021
Residential development for ABGM	Lagos	Abigail Micheal Ltd	Design	2021

PRESENT AND PAST PROJECT REFERENCES

PROJECT	LOCATION	OUR CLIENT	STATUS	YEAR
Residential Development at Shell Camp	Imo State	Baron Architecture	construction	2021
Private Residential development at Shoreline Ikoyi	Lagos	Baron Architecture	construction	2021
Ile-Oja (Shopping Complex) at Opebi Road, Lagos for Cobblestone Properties	Lagos	Cobblestone Properties	Construction	2020
Sketchers Store, Lekki, Lagos.	Lagos	CMDesign	Design	2020
Black Rock Lagos.	Lagos	CMDesign	Design	2020
Ilorin Visual Art Center	Ilorin	Studio Contra	Construction	2020
Beach House Development at Lagos	Lagos	Baron Architecture	Construction	2020
Residential Development at Foreshore Estate	Lagos	Baron Architecture	Construction	2020
Office Development at Saka Tinbu, Lagos	Lagos	Baron Architecture	Completed	2019
Technogym At Il Bagno, Lekki, Lagos	Lagos	Il Bagno	Completed	2019

PRESENT AND PAST PROJECT REFERENCES

PROJECT	LOCATION	OUR CLIENT	STATUS	YEAR
Cobblestone Office at Awolowo Road Ikoyi, Lagos.	Lagos	Baron Architecture	Completed	2019
Country Home Development, Ondo.	Lagos	Baron Architecture	Completed	2019
Glo Experience Centre , Lagos and Ibadan	Lagos /Ibadan	Cobblestone Properties	Construction	2019
Luxury Flats Development At 5, Basgir Dalhatu Street, Ikoyi, Lagos.	Lagos	Chief Wole Olanipekun	Completed	2019
Proposed Residential Development on Plot S6 Road 3 Cowrie-Creek Estate, Eti-Osa Lga, Lagos State	Lagos	Uche Nnama & Chibueze Ekeopara	Construction	2019
Proposed Residential Development at Block 9, Plot li, Shoreline Estate, Parkview Extension, Eti-Osa L.G.A, Lagos	Lagos	Mr Oludayo Dada Aigbe	Construction	2019
Oniru Height at Oniru ,Lagos	Lagos	Pinestar Ltd	Design	2019
Eko Innovation Center at Awolowo Road, Ikoyi, Lagos	Lagos	Urban Citiconstruction	Completed	2019
Commercial Development for Andela at Ilupeju, Lagos.	Lagos	Andela	Construction	2019
Private Residential Development at Banana Island Estate, off Onikoyi Road, Eti-Osa L.G.A, Lagos	Lagos	Freesbury Company Limited	Design	2019

PRESENT AND PAST PROJECT REFERENCES

PROJECT	LOCATION	OUR CLIENT	STATUS	YEAR
Proposed Residential Development Within Victory Park Estate, Igbokushu Village, Eti-Osa L.G.A. Lagos State.	Lagos	Mr Chukwuka Ugha	Construction	2019
Private Residential Development at Block Z(B) Plot 13 Victory Estate, Igbokushu Village Eti-Osa L.G.A Lagos	Lagos	Mrs Bolanle Shobowale	Construction	2019
Olasystem Office Remodelling at Lekki, Lagos	Lagos	Olasystem Ltd	Completed	2019
Office Refurbishment for Cobblestone Property Along Ribadu Road, Ikoyi, Lagos State	Lagos	Cobblestone Property	Completed	2019
Proposed Residential Development at Port Harcourt, Rivers State	River State	Mo'nuel Oasis	Construction	2019
Refurbishment for TSL at Ikate, Lekki	Lagos	TSL Ltd	Completed	2019
The Altona Development at Ikoyi	Lagos	Abigael Michael Ltd	Construction	2018
Alliance Francaise at Osborne Road	Lagos	Baron Architecture	Completed	2018
Matise Development at Lekki	Lagos	Magenta Residential	Completed	2018
Hostel Accommodation at PAN Atlantic University	Lagos	Student Accomod8 Ltd.	Completed	2018


PRESENT AND PAST PROJECT REFERENCES


PROJECT	LOCATION	OUR CLIENT	STATUS	YEAR
Coral Reef Development at Lekki	Lagos	Magenta Residential	Completed	2018
20units Town Homes at Independence Layout	Enugu	Avanti Homes Ltd.	Completed	2018

COMPANY PROFILE

 **Unit 302**

56, Olonode Street
Off Hughes Avenue,
Alagomeji, Yaba, Lagos.

 0802 359 9742

 0903 086 7276

 topklanprojects@topklan.com
Sheriff@topklan.com

 www.topklan.com